



CHIJ (Katong) Primary P6 Parents' Briefing 2025



To Begin A parent's prayer

Dear Lord, thank you for the gift of my daughter.

She is a gift from You to me.

I know that she is your child, whom You have entrusted into my care.

Please help me to teach her well, set a good example, and watch out for her as best as I humanly can.

I ask You to guide her, protect her, watch over her, and walk beside her in her life.

May You keep her safe from harm-both physical and spiritual.

May she grow in faith and love for You and know Your strength inside of herself.

Thank You for guiding and helping her plan her future, ones filled with hope and love for You.

Thank You for being with her in her struggles, helping, loving, and guiding her.

May You help her to keep her belief in You strong and renew a strong belief in You when she turns back to You after times of doubt.

May she grow to know, love, serve, and believe more and more in You throughout her life.

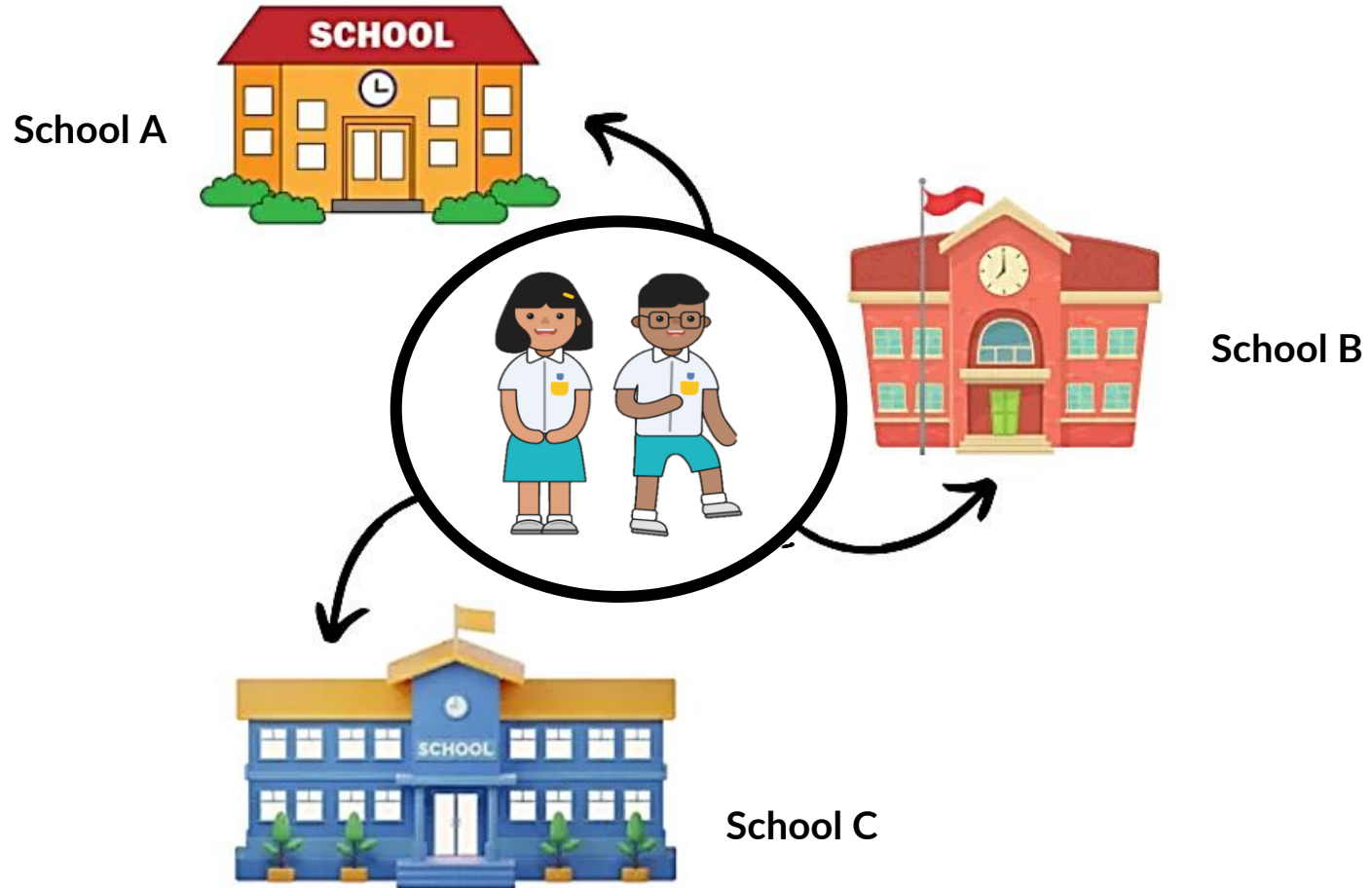
Amen.

PSLE 2025

Considering and Exploring Options



Exploring Options



Exploring Options

01



School Culture

What is the school's culture and identity?

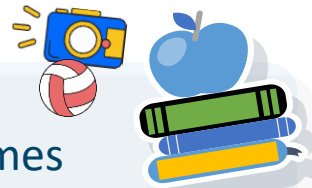
02



Learning Environment

How do I feel about the school based on what I experienced at the Open House or read about on the school's website/SchoolFinder?

03



Programmes

Does the school have programmes I would enjoy? (E.g. I am interested in coding, so I hope to find a school which offers it as their Applied Learning Programme.)

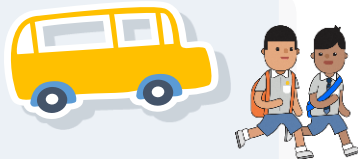
04



CCAs

Are there CCAs that interest me and can nurture my strengths?

05



Location

How long will it take for me to travel to school and back home?

Exploring Options

There are resources that can help you find the right school for you. One example would be the SchoolFinder.

We can use the SchoolFinder to find out more about the secondary schools near me.



Explore the SchoolFinder

Find schools that are near you and have CCAs and programmes you like. Visit the school website to find out more!

<https://go.gov.sg/explore-schoolfinder>

**SCHOOL
FINDER**

Use SchoolFinder to explore schools that meet your needs.

FIND SCHOOLS



Exploring Options

Another example would be the MySkillsFuture Student Portal.

Our Form Teacher showed us how to use the MySkillsFuture Student Portal to look for schools with programmes that interest us...Do you remember how to use it?



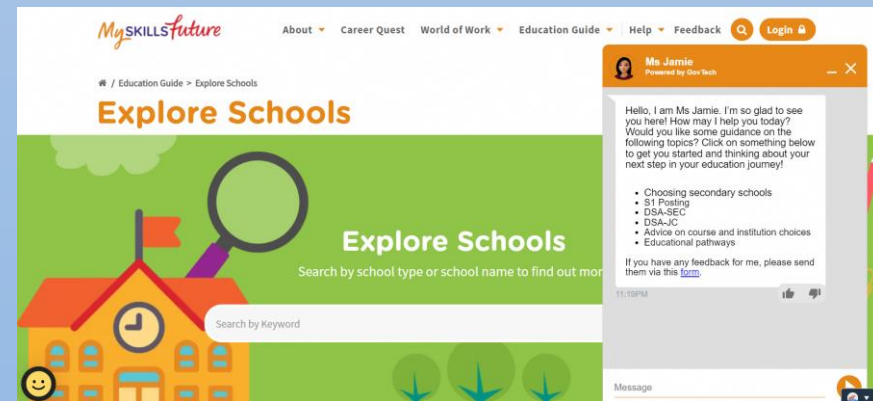
We can even use it to compare different secondary schools! Let me show you how!



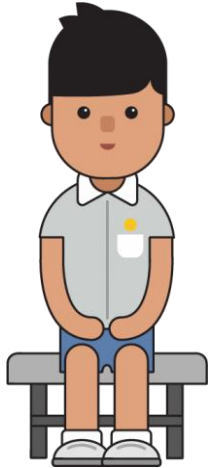
Access the MySkillsFuture Student Portal

Explore schools in the *Education Guide* feature and seek advice on education choices from Ms Jamie.

<https://go.gov.sg/exploreschools>



Exploring Options



You can learn more about the school's culture and learning environment when you visit secondary schools' open houses.

PSLE 2025

Secondary School



Secondary School

With Full Subject-Based Banding, you can learn each subject at the level that suits you best and be in classes with friends who have different strengths, interests and abilities.



Check out the following Full SBB resources to find out more:

Scroll through the PSLE-Full SBB microsite:-<https://go.gov.sg/pslefsbb>



See what your path could look like at the Full SBB Interactive Site:
<https://go.gov.sg/my-fsbb-path>



Full Subject-Based Banding:

Students:

Can take subjects at three subject levels, known as G1, G2 and G3 (G stands for General), mapped from today's N(T), N(A) and Express standards respectively. They will have the flexibility to adjust their subject levels at appropriate junctures, based on their strengths, interests and learning needs.

PSLE Score	Posting Groups	Indicative level for most subjects at start of Secondary 1
4 – 20	PG3	G3
21 and 22	PG2 or PG3	G2 or G3
23 and 24	PG2	G2
25	PG1 or PG2	G1 or G2
26 – 30 (with AL 7 in EL and MA)	PG1	G1



Find out more at the PSLE-Full
SBB microsite.

<https://go.gov.sg/pslefsbb>

How should you submit your school choices after you receive your PSLE results?

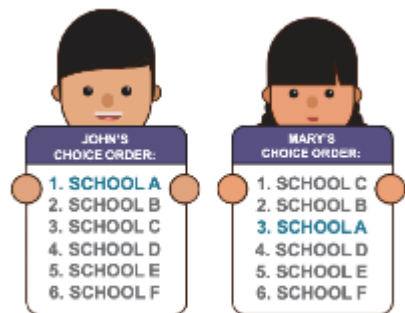
- Use all 6 options with a range of cut-off points (COPs) as choice order of schools will affect your school posting.
- Take reference from schools' PSLE score ranges from the previous year via SchoolFinder or MySkillsFuture Student Portal.
- You are strongly encouraged to include at least 2 to 3 schools where your PSLE score is **better** than the school's previous year's COP.
 - Note that actual COPs of schools can vary year on year.
 - Do take into account that if you just meet the COP of a school, it also means that majority of the students in that school have better PSLE score than you.
 - Rank your preferred school higher in the choice order of schools, to increase your chances of being posted to that school, especially in tie-breaking situation.

In choosing secondary schools, it is not about getting into the most popular school but the school that can develop your strengths, interests, abilities and talents.



Choice Order Matters

You will be posted to a secondary school based on your PSLE score (i.e. those with better PSLE scores will be posted first), and choice order of schools.



In the event that two or more students with the same PSLE score are vying for the last remaining place(s) in a school, the following tie-breakers will be used in the following order:

(i) **CITIZENSHIP**

(ii) **CHOICE ORDER OF SCHOOLS**

(iii) **COMPUTERISED BALLOTING**

Mary

Singapore
Citizen

20 pts

SCHOOL CHOICES:

- 1) Sch A
- 2) Sch B
- 3) Sch C
- 4) Sch ...



Jane

Singapore
Citizen

16 pts

SCHOOL CHOICES:

- 1) Sch A
- 2) Sch ...
- 3) Sch ...
- 4) Sch ...



Bryan

Singapore
Citizen

20 pts

SCHOOL CHOICES:

- 1) Sch B
- 2) Sch ...
- 3) Sch ...
- 4) Sch ...



How do the tie-breakers work?

Mary

Singapore
Citizen

20 pts

SCHOOL CHOICES:

- 1) Sch A
- 2) Sch B
- 3) Sch C
- 4) Sch ...



Jane

Singapore
Citizen

16 pts

SCHOOL CHOICES:

- 1) Sch A
- 2) Sch ...
- 3) Sch ...
- 4) Sch ...



Bryan

Singapore
Citizen

20 pts

SCHOOL CHOICES:

- 1) Sch B
- 2) Sch ...
- 3) Sch ...
- 4) Sch ...



- There is only one place left in School A, and Jane and Mary have both listed School A as their first choice.
- As Jane has a better PSLE score than Mary, she will get the last place in School A and be posted to it.
- As the last place in School A has been taken up by Jane, Mary will now be considered for her second choice of school - School B.

Tie-breaker

Choice Order of Schools

Bryan

Singapore
Citizen

20 pts

SCHOOL CHOICES:

- 1) Sch B
- 2) Sch ...
- 3) Sch ...
- 4) Sch ...



Mary

Singapore
Citizen

20 pts

SCHOOL CHOICES:

- 1) Sch A
- 2) Sch B
- 3) Sch C
- 4) Sch ...



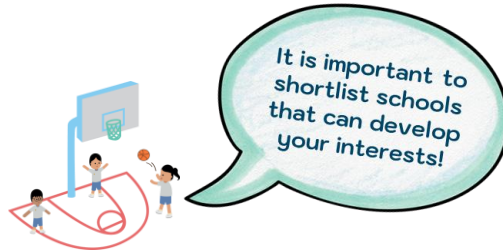
Jane

Singapore
Citizen

16 pts

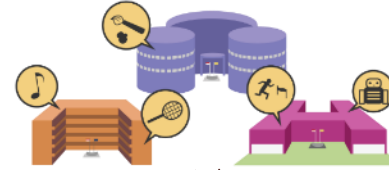
SCHOOL CHOICES:

- 1) Sch A
- 2) Sch ...
- 3) Sch ...
- 4) Sch ...



- Bryan has the same PSLE score as Mary and has listed School B as his first choice.
- School B also only has one place left, and so tie-breakers will be applied to determine who will be successfully posted there.
- Since both Mary and Bryan are Singapore Citizens, we will apply the next tie-breaker: Choice Order of Schools.
- Because Bryan ranked School B higher than Mary, he will be posted to School B.
- Since Bryan has taken the last place in School B, Mary will be considered for her next choice, School C.

TIMELINE OF THE S1 POSTING



NOVEMBER

1. Release of the PSLE results
2. Submission of Secondary 1 Option



DECEMBER

Release of
School
Posting
results



CHIJ Katong Convent Secondary School



Katong Convent... a Convent by the Sea



- Established since 1930
- A Catholic mission school, one of 11 IJ schools
- An Autonomous School since 2003
- Affiliated with CHIJ (Katong) Primary & Catholic Junior College

Niche in the Arts - Distinctive Programmes @ KC



Lower Sec Drama
Programme



Upper Sec Art
(1 of 9 Enhanced Art
Programme centres)



Annual Book & Music
Week



LEAD

PHILICIA GEOW 22S34



Students - Our Pride

- Alumna of KCP, KC & VJC
- KC Class of 2021
- While in KC...
 - Drama Club & SYF
 - Student Councilor
 - Catholic Support Leader
- Recipient of Lee Kuan Yew Award for Outstanding Normal Course Students
- President of VJC Students' Council



Students – Our Pride



Yasmin Hannah Bte Mohamed Hardi

- Class of 2022
- Floorball Captain
- Winner of the Minnie D’Rozario Sports Award
- Awarded a place for Polytechnic Foundation Programme at Temasek Polytechnic

Arin Chua

- Class of 2024
- Girl Guide & Student Leader
- Active Participation in the Arts
- Winner of Marie Bong Literature Award
- Secured a place at Ngee Ann Polytechnic, School of Film & Media Studies through DSA

Admission to KC via Sec 1 Posting

Cut-Off Point[#] for 2025 Sec 1 Posting

	Non-Affiliated	Affiliated	Affiliate Minimum Requirement (AMR)
Posting Group 3	13	20	20
Posting Group 2	24	25	25
Posting Group 1	30*	28	30 with AL7 or better in both EL and Math

Excludes students admitted via DSA

** Last student posted has a PSLE Score better than 30, but there are still vacancies.*

CHIJ Katong Convent E-Open House

23 May
Friday
4-5 pm



MS TEAMS

REGISTER NOW



<https://go.gov.sg/chijkceopenhouse2025>

**COME
EXPERIENCE
THE KC SPIRIT!**



Hear about...

- the student experience @ KC
- our Direct School Admission (DSA) Programme
- why KC is the right choice for you!



In Conversation





PSLE: WHY ARE WE SO STRESSED?

REGARDLESS OF GRADES



<https://www.youtube.com/watch?v=d5X8pJu2R0s>

In Conversation

What Our Girls are telling us

What we love about school:

1. CCA activities. Have enjoyed the interaction with other school mates and friends.
2. Pride to represent the school in competitions such as NSG and Debates.
3. Peer Support Leader sessions and the Peer Support Programme.
4. While coping with schoolwork and tuition work, some students are finding ways to relieve stress by engaging in other activities, such as playing chess and spending time with families.
5. Learning Journeys and Enrichment Lessons.

In Conversation

What Our Girls are telling us

What are our Areas of Concern:

1. Some students find it difficult to cope with Mother Tongue, because of less use, as compared to English Language, at home.
2. Concerned about approaching PSLE, preparation for PSLE going full steam ahead, expecting stress level to increase.
3. There are some students who don't get along well but are still friends. Generally, most students are friends with each other. There are some students who are a bit more demanding and want people around them to give in to them.
4. Problems coping with tuition homework, school homework, enrichment, demands and expectations of parents.
5. Self – esteem, body image, self – pressure.

In Conversation

What Our Girls are telling us

How we can support our girls:

1. Have daily conversations/dates with them that are NOT PSLE or secondary school focused.
2. When discussing their future schools – it would be good to know what your daughters are interested in and do research together with them, based on their interest.
3. Consider the school programmes (not just academic) and the proximity of the school as they will have more subjects and longer school hours.
4. It is important to manage their stress (e.g., winding down with reading a book) and having sufficient sleep. Another good option would be relaxing exercise in nature.
5. Monitor the use of their phones and social media.
6. Talk through with them challenges that they will face (not meeting their targets, friendship issues). Advise them that failure and disappointment are part and parcel of life, and when overcome, will make them more confident to face future challenges.
7. Have fun with them. The PSLE is just an exam and but one challenge that they will have in life. They will only be your little girls for a short while more. Take the time to teach them how to manage their stresses and disappointments, their emotions, their social skills – what they will need for life.
8. Teach them to navigate the test of life, not a life of tests.



THANK YOU